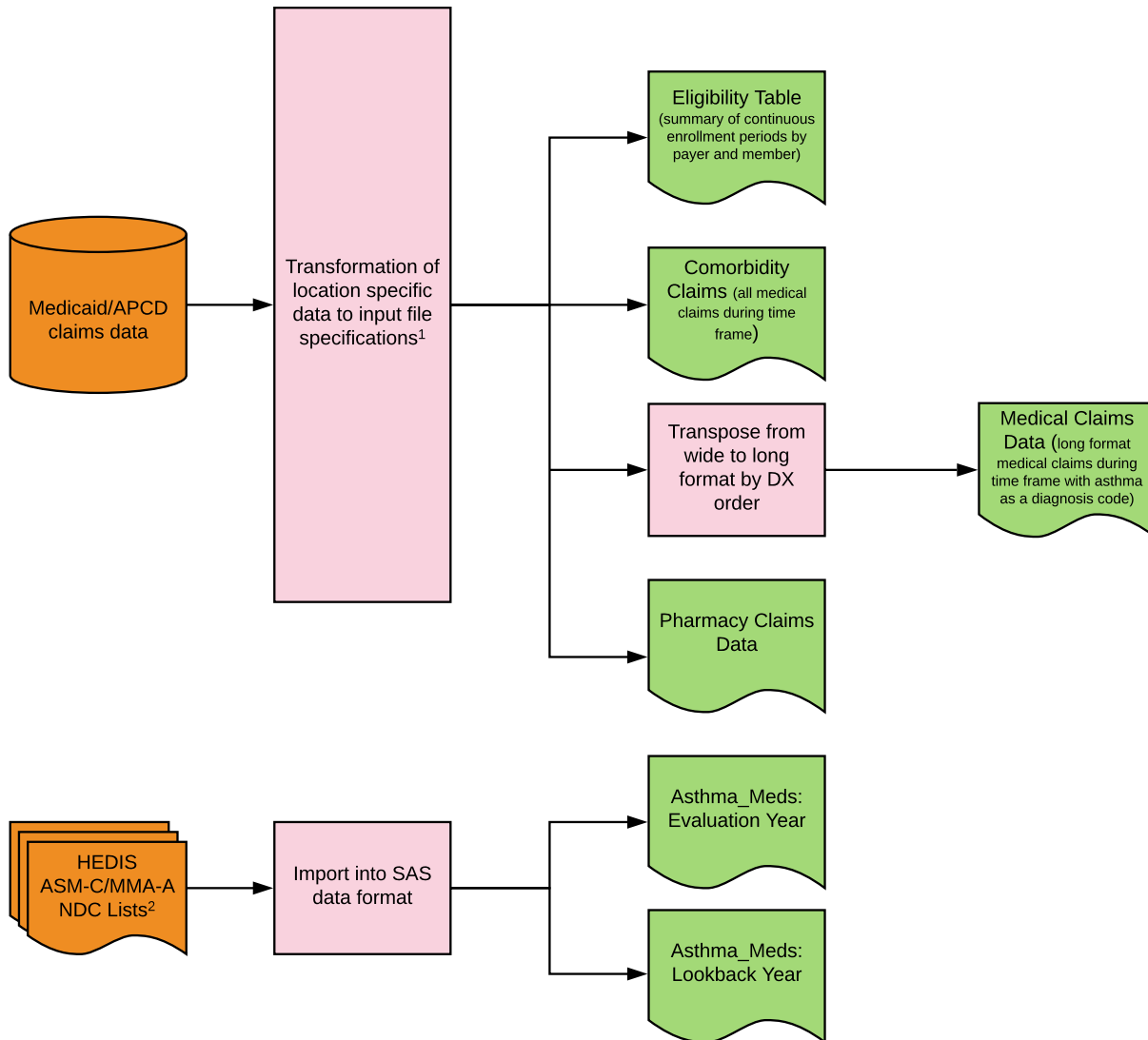


Asthma 1 Measure Calculation Steps

1. Pre-Measure Processing Steps



NOTES

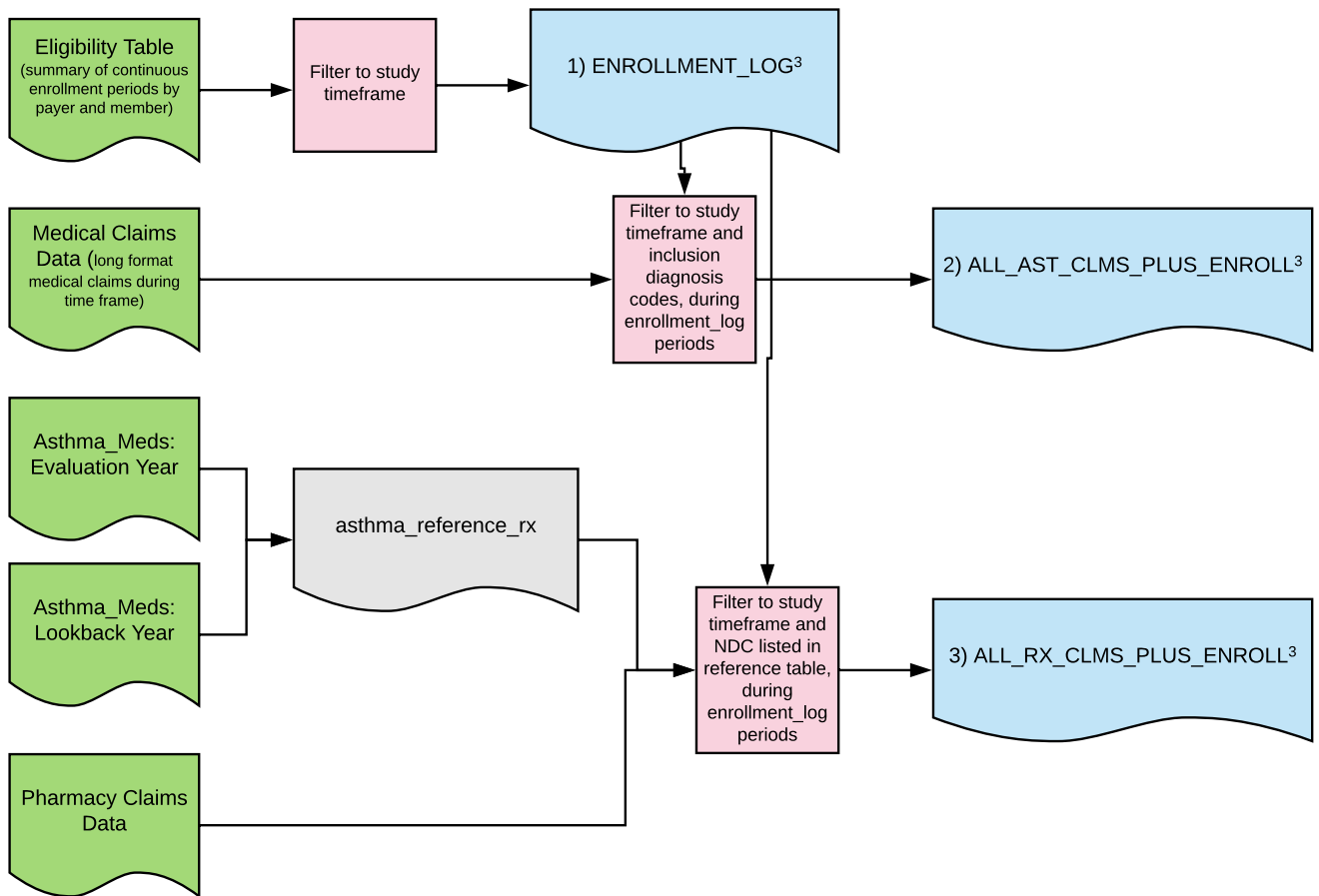
¹Input files must be created to specifications provided, but implementation details are left to specific sites.

²Asthma Med information comes from the HEDIS defined ASM-C or MMA-A NDC lists for asthma medications.

Key

Asthma 1 input file
Asthma 1 output file
Useful intermediate file
Other intermediate file
Process Description
External Data Source

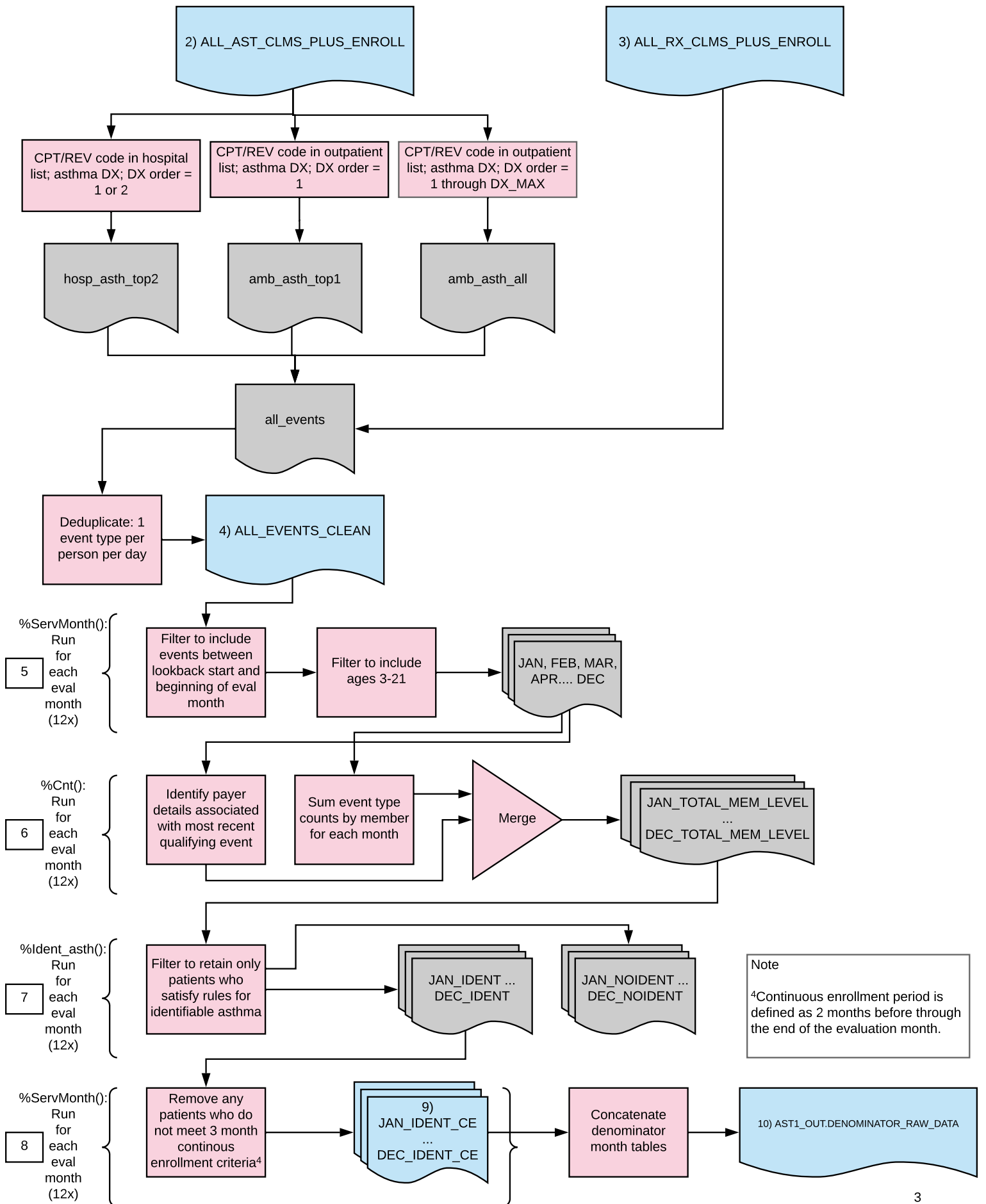
2. Reference file creation



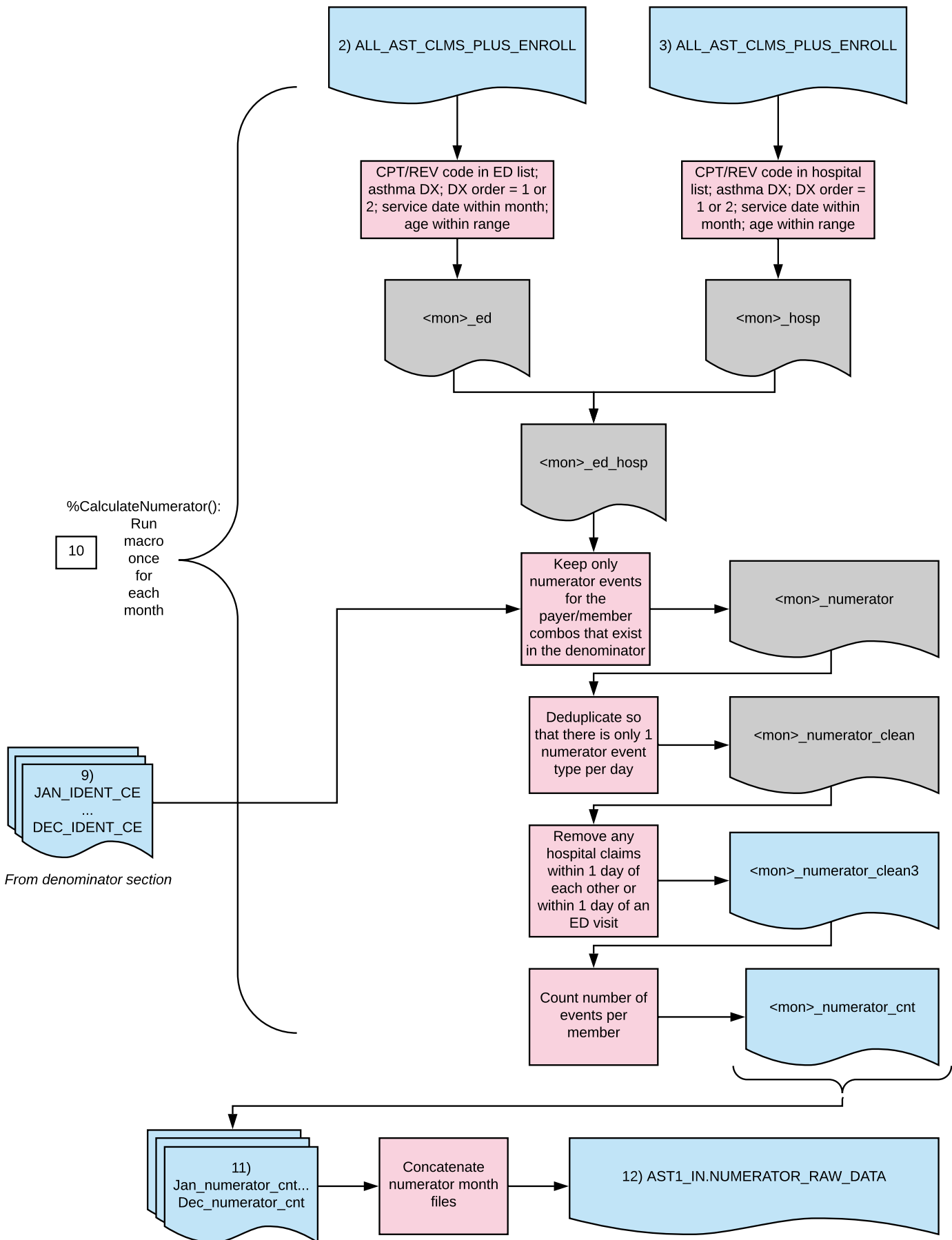
NOTE

³These are the reference files used to identify numerator and denominator events.

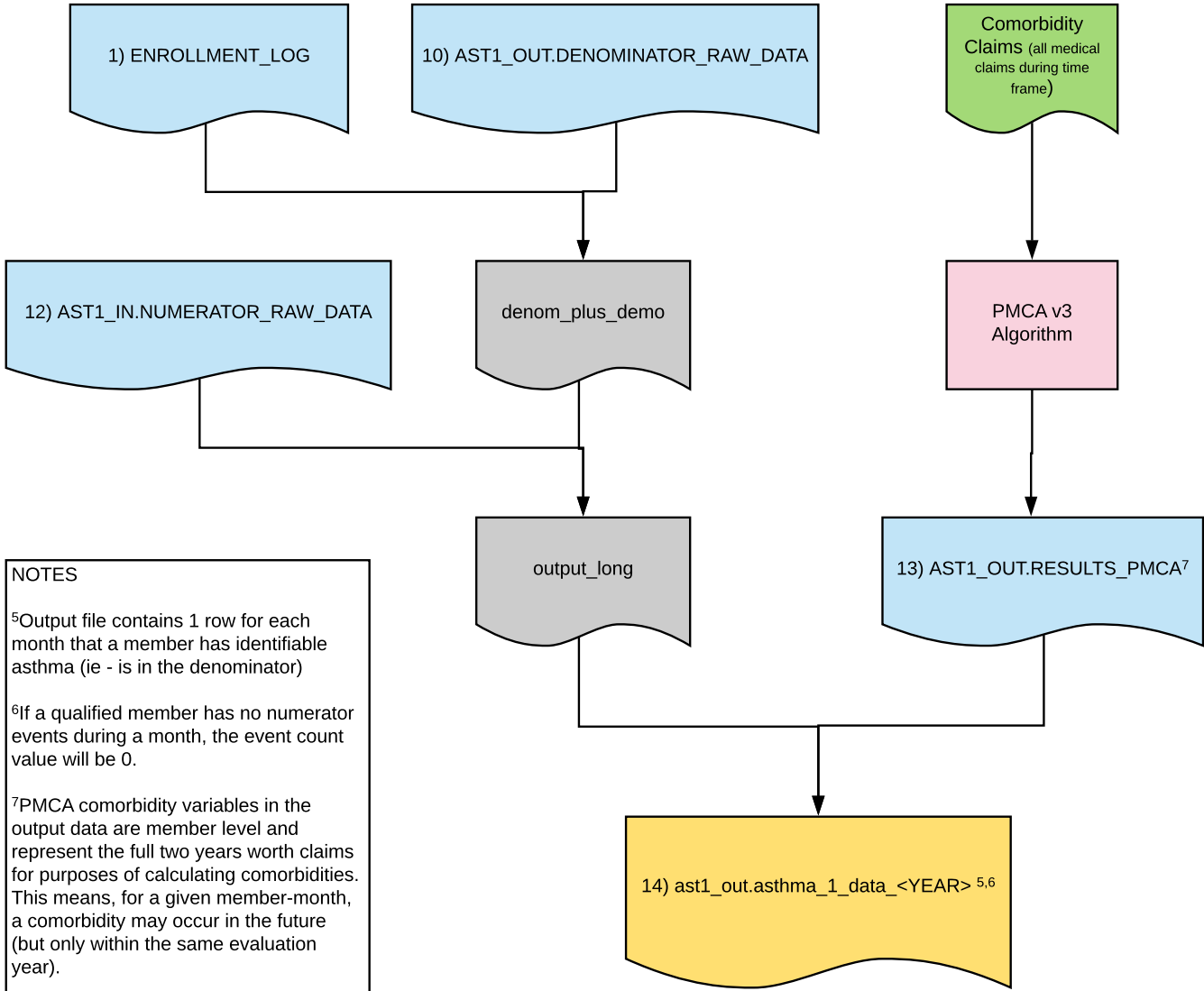
3. Denominator Calculation



4. Numerator Calculation



5 Output File Creation



NOTES

⁵Output file contains 1 row for each month that a member has identifiable asthma (ie - is in the denominator)

⁶If a qualified member has no numerator events during a month, the event count value will be 0.

⁷PMCA comorbidity variables in the output data are member level and represent the full two years worth claims for purposes of calculating comorbidities. This means, for a given member-month, a comorbidity may occur in the future (but only within the same evaluation year).